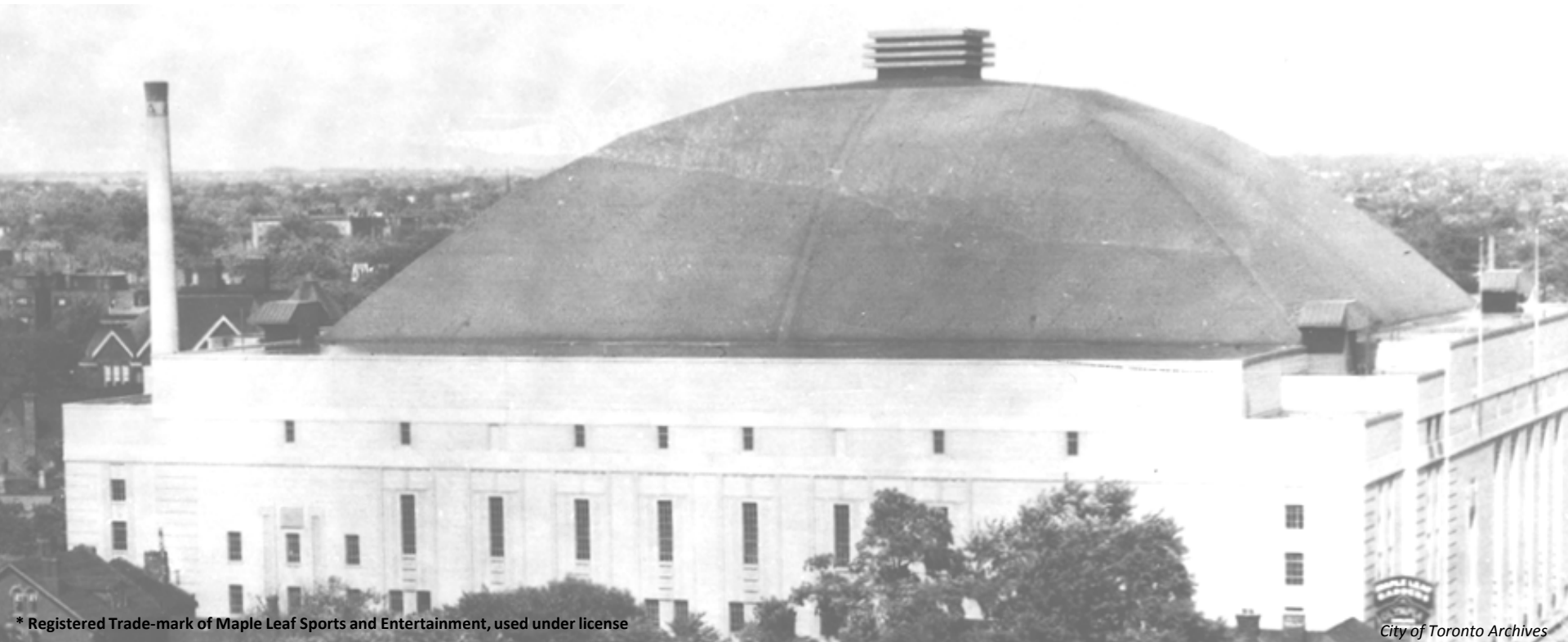


THE ADAPTIVE REUSE OF /
LA RÉUTILISATION ADAPTATIVE DE
MAPLE LEAF GARDENS*

JANE MARSHALL / BRUCE MOONEY

LOBLAW PROPERTIES LTD. / LES PROPRIÉTÉS LOBLAW LTÉE.

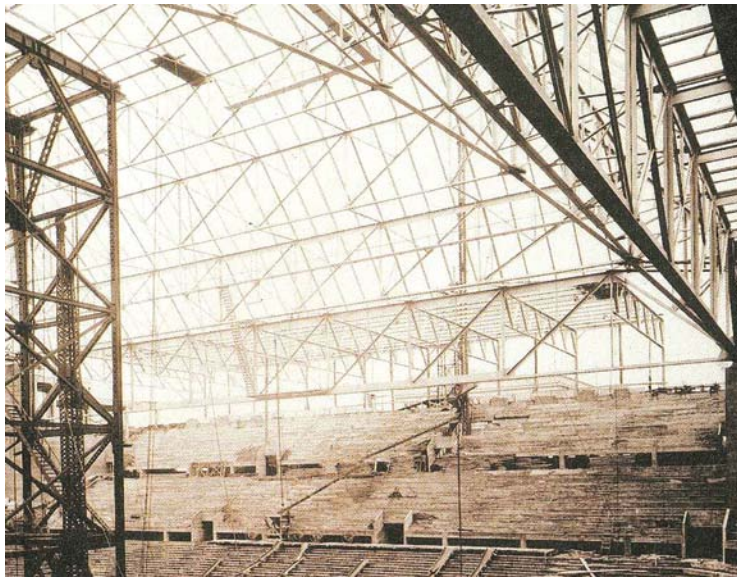


* Registered Trade-mark of Maple Leaf Sports and Entertainment, used under license

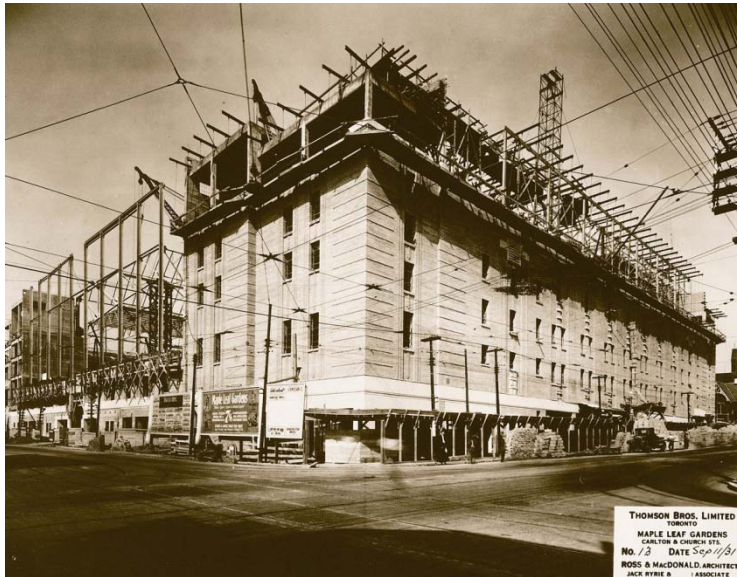
MAPLE LEAF GARDENS*

A TORONTO LANDMARK

UN DES PRINCIPAUX MONUMENTS DE TORONTO



Thomsen Bros. Limited



Thomsen Bros. Limited

THOMSON BROS. LIMITED
TORONTO
MAPLE LEAF GARDENS
CARLTON & CHURCH STS.
No. 13 - DATE Sept 1927
ROSS & MACDONALD, ARCHITECTS
JACK MYRIE & ASSOCIATE



City of Toronto Archives



City of Toronto Archives

Photos courtesy
collection of Dan
Diamond and
Associates

* Registered Trade-
mark of Maple Leaf
Sports and
Entertainment, used
under license

WITH A CLASSIC EXTERIOR...AVEC UNE FAÇADE CLASSIQUE

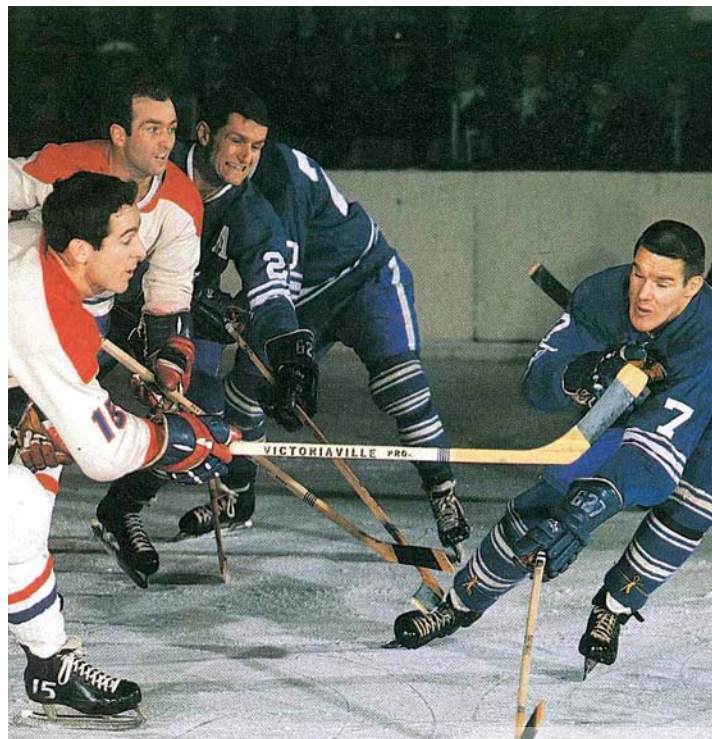


Photos courtesy collection of Dan
Diamond and Associates

RICH IN HISTORY / RICHE EN HISTOIRE

A SHRINE FOR HOCKEY...

UN SANCTUAIRE POUR LE HOCKEY...



Harold Barkley Collection

...AND SO MANY OTHERS

...ET TANT D'AUTRES



Telegram Archives, York University



Public Archives of Canada



PRESERVATION / PRÉSERVATION



WHY / POURQUOI LOBLAW?



MONTREAL
JEAN-TALON



LOBLAW / RYERSON

A STRONG AND CAPABLE PARTNERSHIP

- PRODUCTIVE ALLIANCE OF HERITAGE AND NON-HERITAGE ORGANIZATIONS

UN PARTENARIAT SOLIDE ET COMPÉTENT

- ALLIANCE PRODUCTIVE D'ORGANISMES PATRIMONIAUX ET NON PATRIMONIAUX



RYERSON UNIVERSITY

80 YEARS AFTER ITS ORIGINAL CONSTRUCTION, **MAPLE LEAF GARDENS*** IS BORN AGAIN, AND HAS REGAINED ITS RIGHTFUL PLACE SERVING AS A GREAT GATHERING PLACE FOR ENTERTAINMENT, CULTURE AND HISTORY

80 ANS APRÈS SA CONSTRUCTION ORIGINALE, **MAPLE LEAF GARDENS*** RENAÎT ET RETROUVE SA JUSTE PLACE DE LIEU DE RENCONTRE IDÉAL POUR LES LOISIRS, LA CULTURE ET L'HISTOIRE



WHY / POURQUOI RYERSON?

- INNOVATIVE
- ENTREPRENEURIAL
- URBAN
- NOVATEUR
- ENTREPRENANT
- URBAN

Digital
Media
Zone

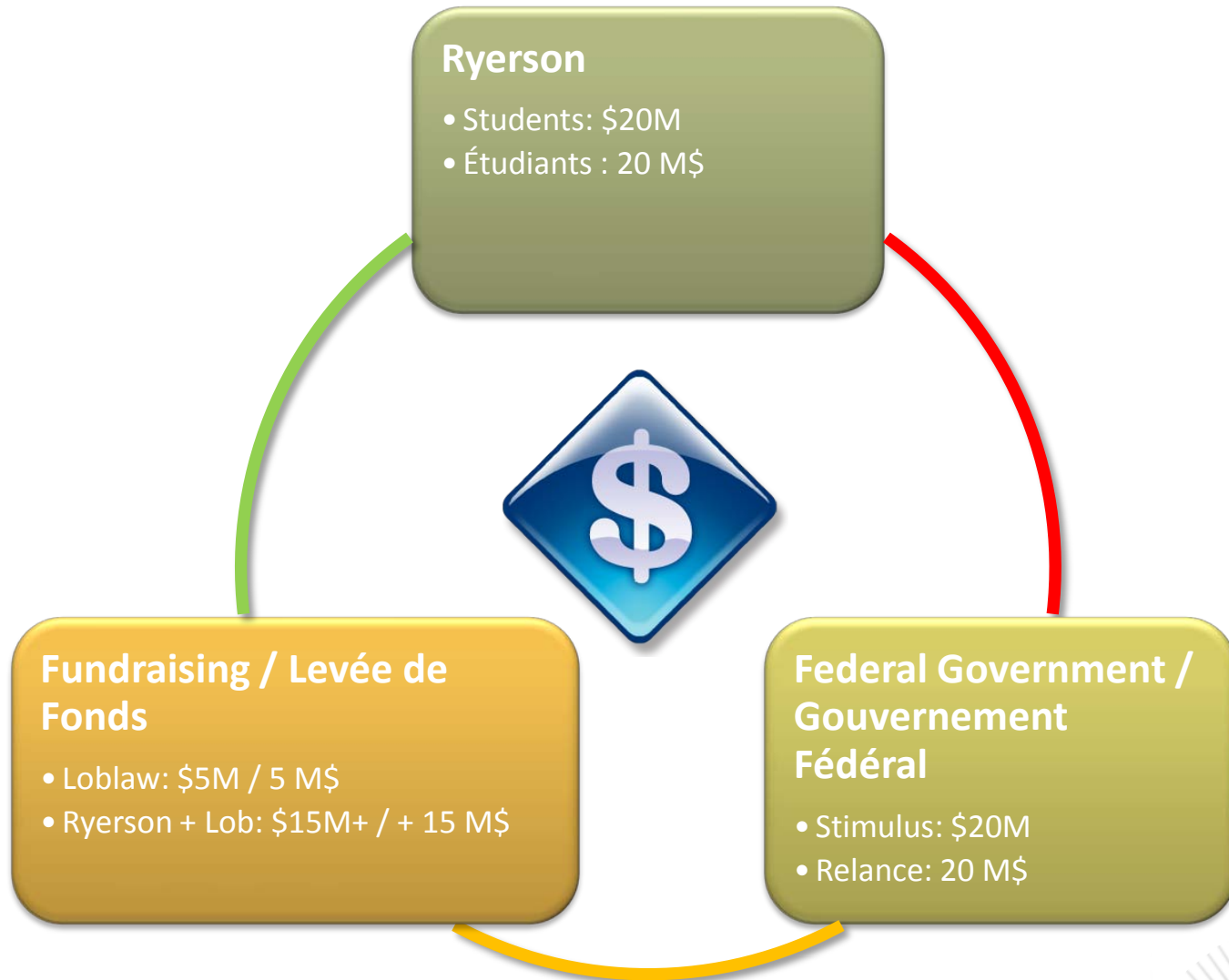


Ryerson image courtesy of Ryerson University
www.ryerson.ca

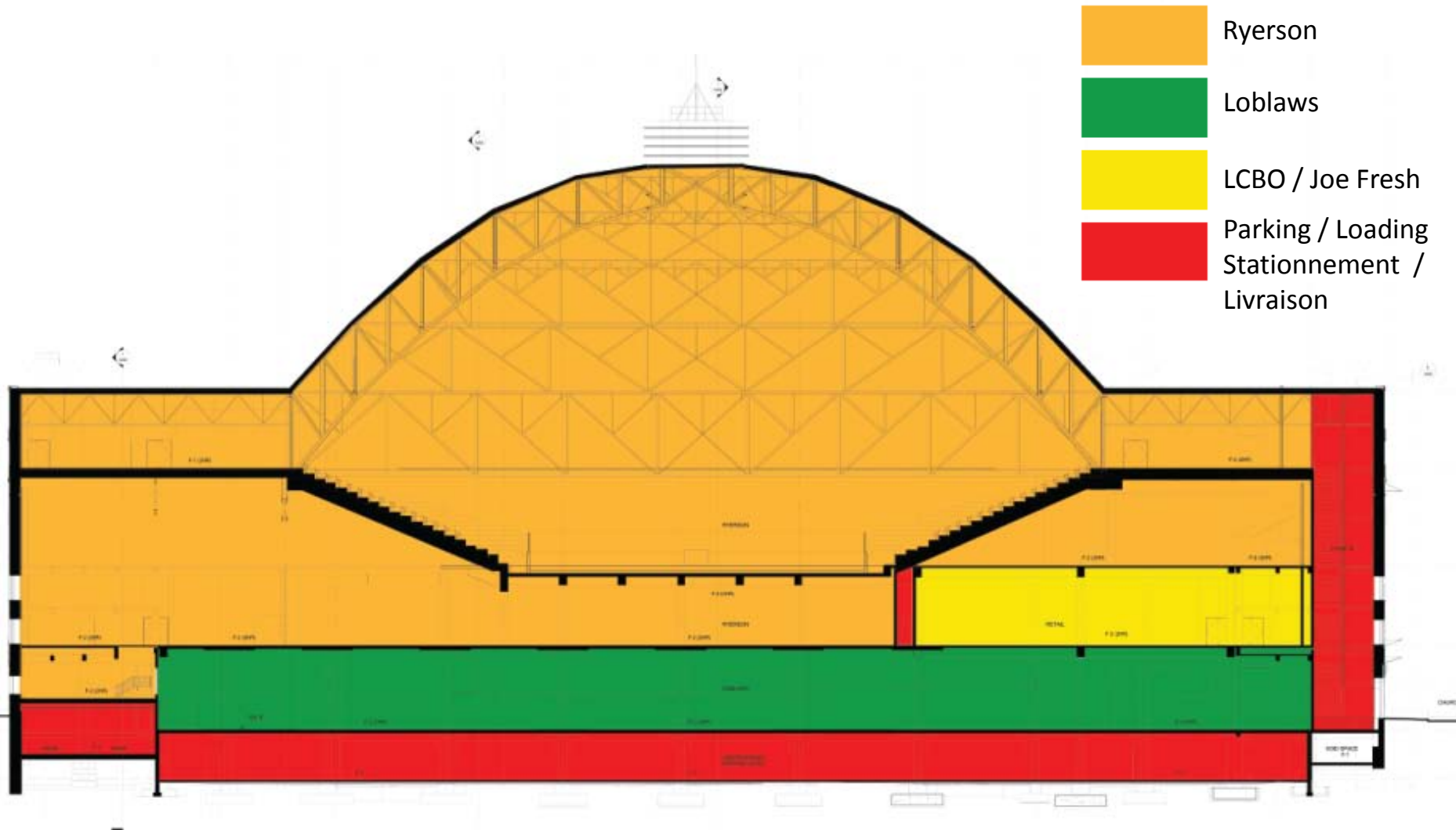
TED
ROGERS
SCHOOL OF MANAGEMENT
RYERSON UNIVERSITY



THE DEAL / L'ENTENTE



THE DESIGN... LE PLAN



HISTORICAL CHALLENGES, AND HOW THEY WERE MET

DÉFIS HISTORIQUES, ET LA FAÇON DONT ILS ONT ÉTÉ ABORDÉS

STRUCTURAL ISSUES WERE SIGNIFICANT

LES PROBLÈMES STRUCTURELS ÉTAIENT
IMPORTANTES



Photos trademark Loblaw Properties Ltd

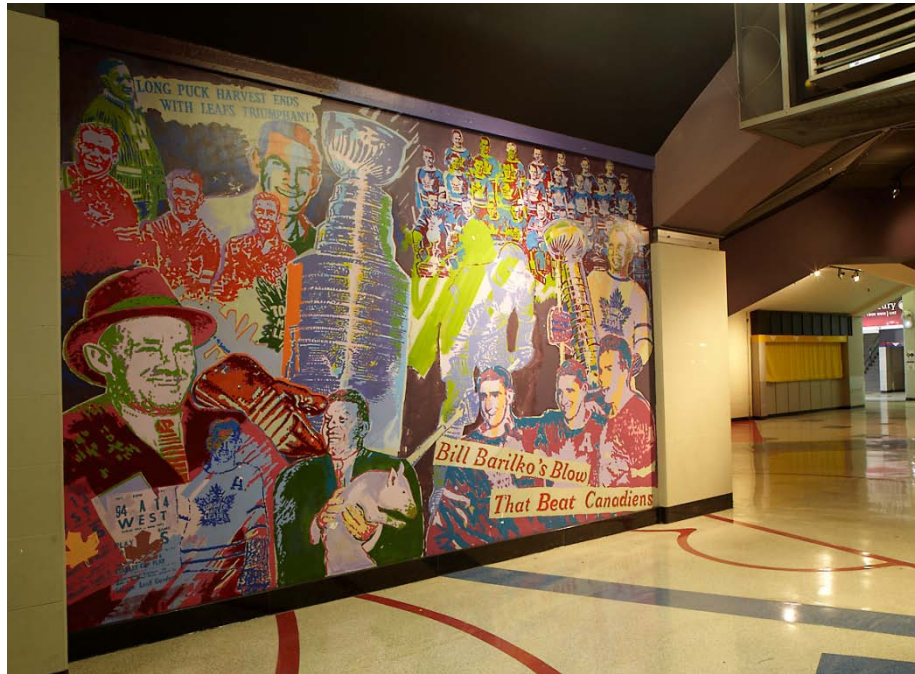


THE BEST FEATURES...OLD AND NEW

LES PARTICULARITÉS...L'ANCIEN ET LE NOUVEAU

PRESERVE THE PAST... EDUCATE THE FUTURE

PRÉSERVER LE PASSÉ ... CULTIVER L'AVENIR



1994



Photos trademark Loblaw Properties Ltd

2011

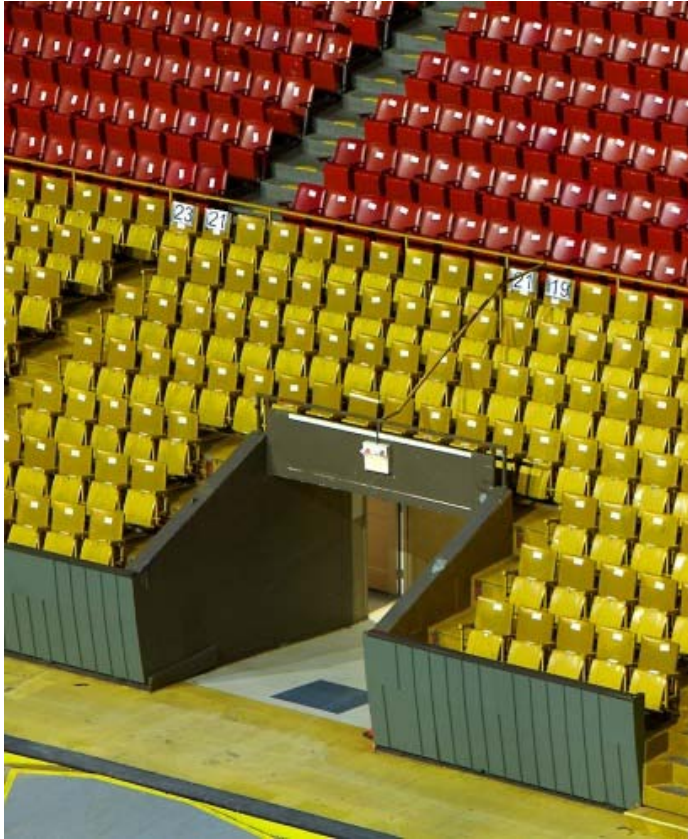


THE BEST FEATURES...OLD AND NEW

LES PARTICULARITÉS...L'ANCIEN ET LE NOUVEAU

WITH ARTISTRY AND DESIGN

AVEC L'ART ET LE DESIGN



2004



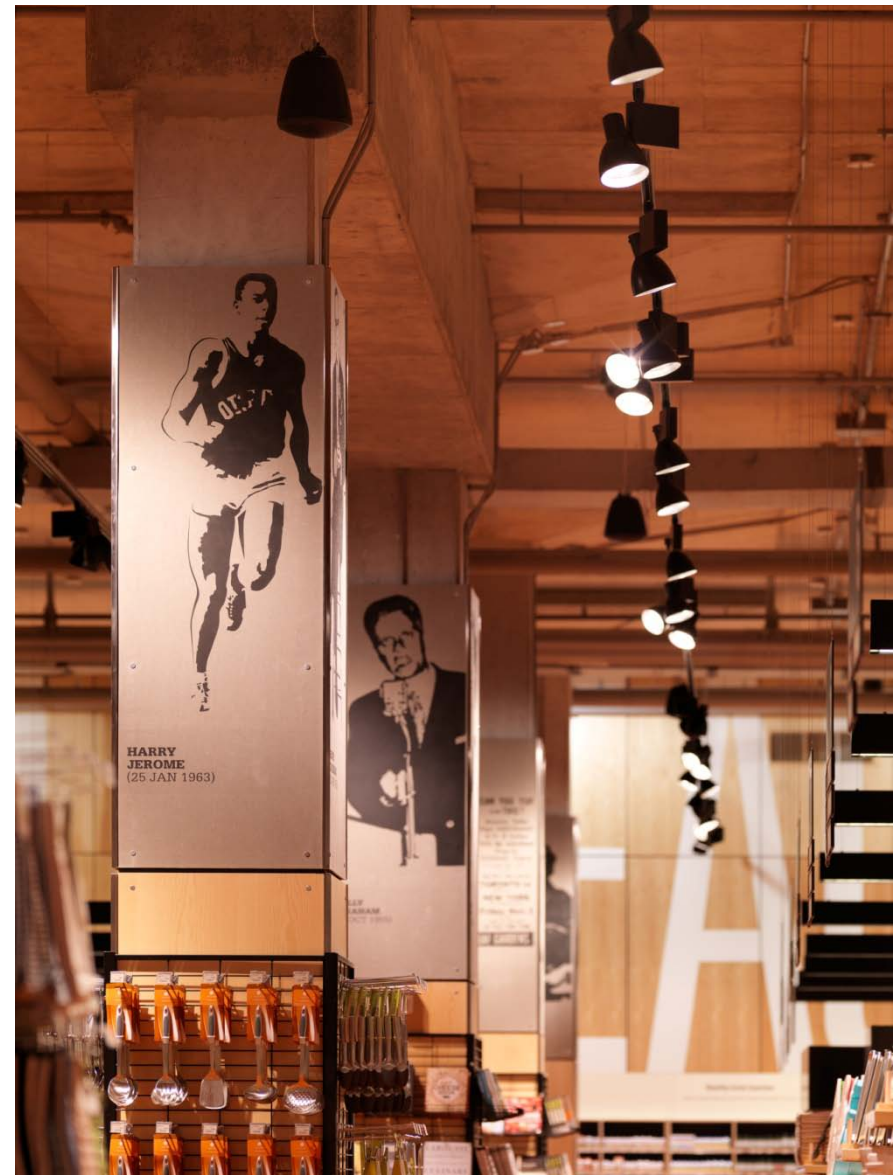
Photos trademark Loblaw Properties Ltd

2011



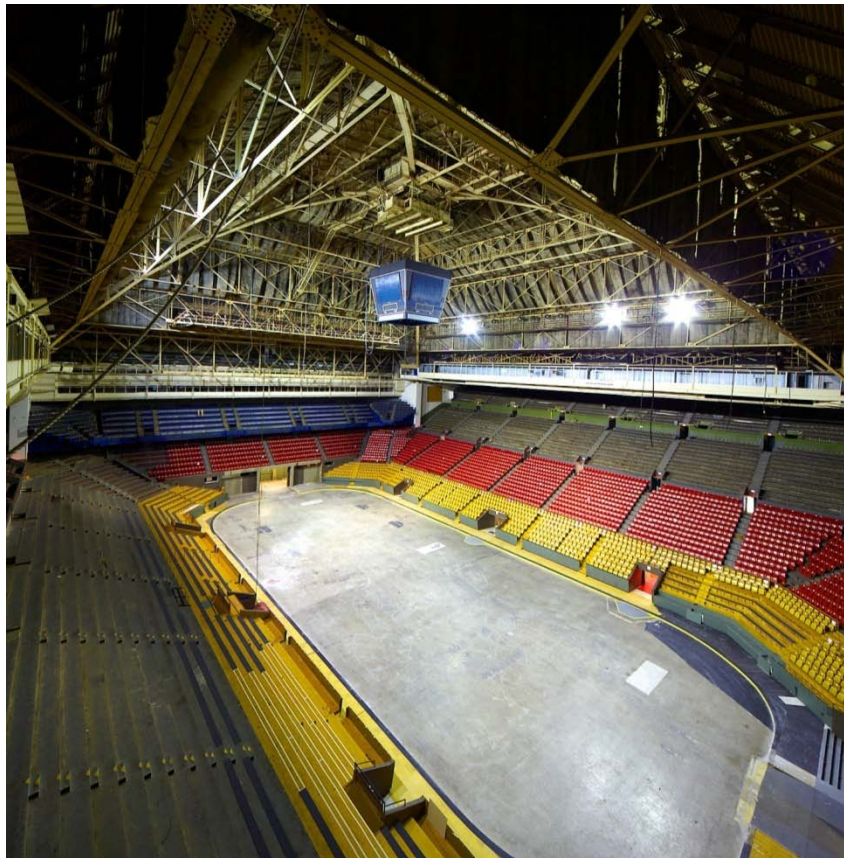
THE BEST FEATURES...OLD AND NEW

LES PARTICULARITÉS...L'ANCIEN ET LE NOUVEAU

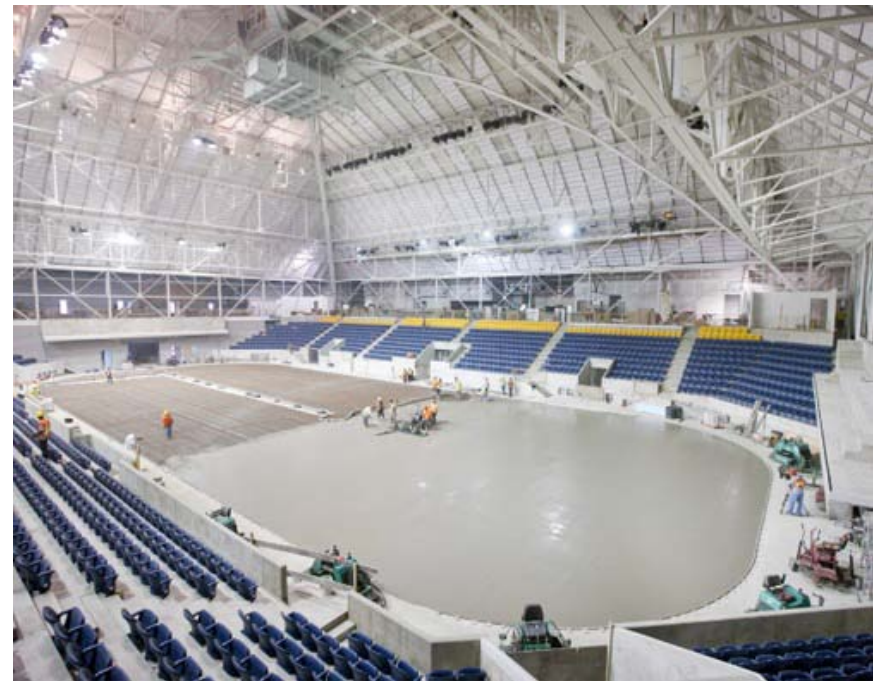


THE BEST FEATURES...OLD AND NEW

LES PARTICULARITÉS...L'ANCIEN ET LE NOUVEAU



2004

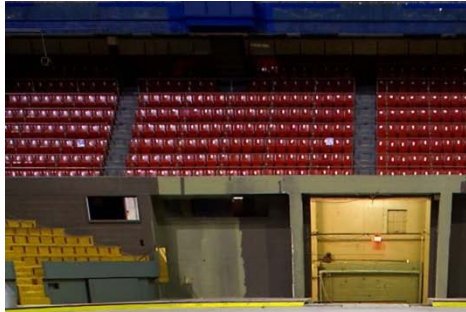


Photos trademark Loblaw Properties Ltd and Ryerson University

2012



AND A FEW SURPRISES... ET QUELQUES SURPRISES



WAYNE & ISABEL FOX
CE FOUNDATION
MIRA C

MSC BANK CANADA
BANK OF MONTREAL
CIBC
CIBC
CIBC

THE YEAR OF 1931

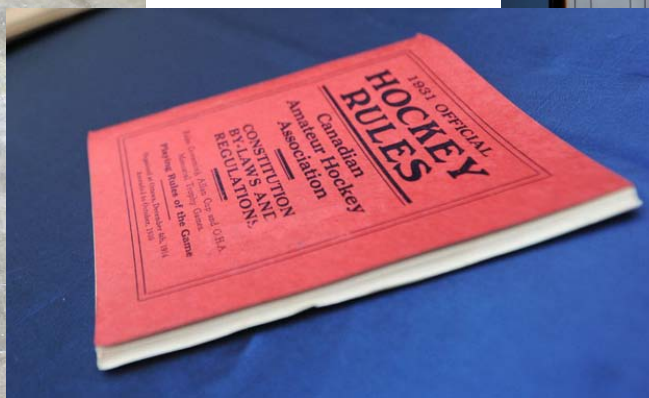
MAPLE LEAF GARDENS TIME CAPSULE THE REVEAL

The year is 1931. At the height of the Depression, a young, visionary Conn Smythe undertakes an audacious project to construct a new arena for his beloved Toronto Maple Leafs in only five months, not knowing that it will become a revered landmark for generations to come.

Fast forward 80 years. During renovations to launch the next phase of life for Maple Leaf Gardens, a time capsule is found. Join Ryerson University and Loblaw Companies Limited in sharing this special moment as we unveil its contents and celebrate this new chapter in the history of Toronto and Maple Leaf Gardens.

Loblaw's
@ MAPLE LEAF GARDENS

RYERSON UNIVERSITY
Everyone Matters at Ryerson



RESPONSE ... RÉACTION

- “THE STUNNING NEW LOBLAWS BRINGS LIFE TO THE OLD HULK AND A NEW URBAN BUZZ TO ITS DOWNTOWN NEIGHBOURHOOD...HERE WAS AN EXAMPLE OF PUBLIC AND PRIVATE SECTORS COMING TOGETHER TO DO SOMETHING GREAT.”*
- “WORLD-CLASS ATHLETIC CENTRE OPENS AT RYERSON” **



Photos trademark Loblaw Properties Ltd and Ryerson University

- LOBLAW <<A TOUT MIS EN OEUVRE POUR EN METTRE PLEIN LA VUE AUX CLIENTS (DESIGN, MARCHANDISAGE). D'AILLEURS, AU COURS DE NOTRE VISITE, NOUS Y AVONS CROISÉ DES TOURISTES QUÉBÉCOIS QUI PRENAIENT DES PHOTOS DES LIEUX TOUT EN EXPRIMANT LEUR ÉMERVEILLEMENT! >> ***

* Marcus Gee– Globe and Mail, Nov 30, 2011

** Epoch Times Staff

*** Marie-Eve Fournier- Les Affaires, May 19, 2012

