

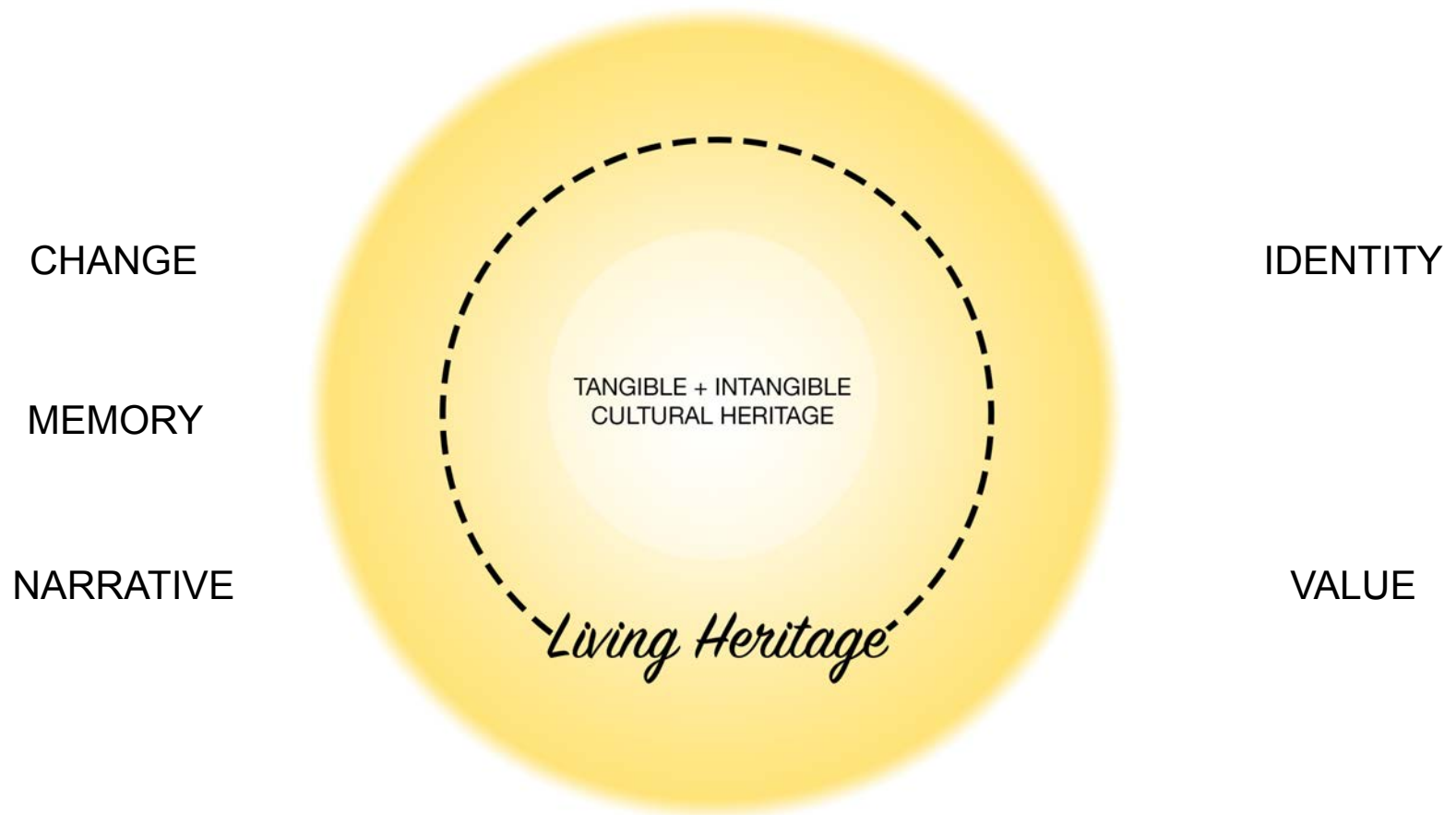
# LIVING HERITAGE: RE-IMAGINING WOODEN CRIB GRAIN ELEVATORS ON THE PRAIRIES

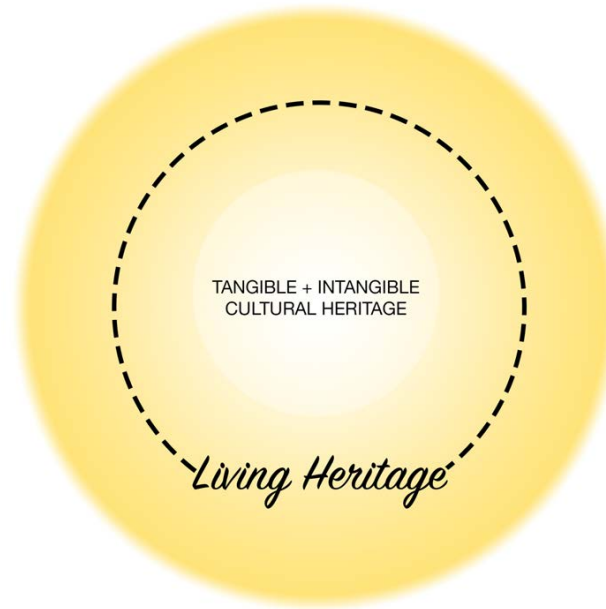
ALI PIWOWAR



*Why are wooden crib grain elevators important architecture within Saskatchewan's evolving culture, and how can they be adapted for future use?*

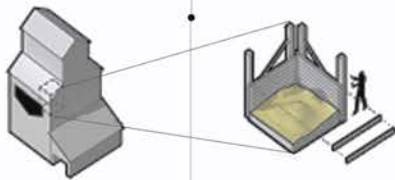
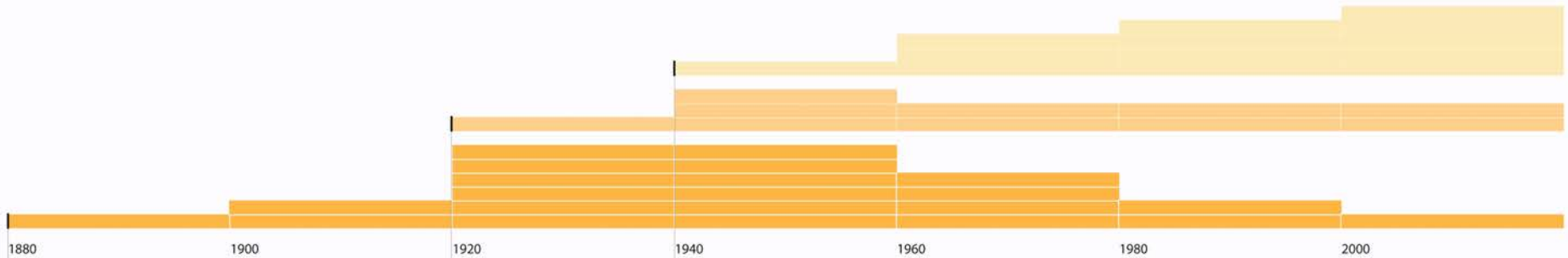






1. Recognize the *value* of people, places and events in the **past**
2. Identify their *importance* in the **present** day
3. Negotiate their *opportunities and assets* for the **future**

1 BAR = 500 ELEVATORS

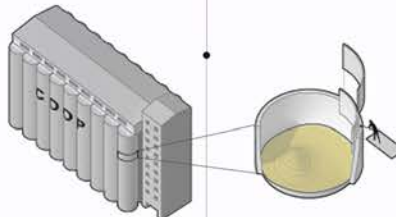


**WOODEN CRIB GRAIN ELEVATOR**

Average Bushel Capacity = 25,000

- Heavy timber structure with wood panel cribbing
- Constructed by 10 - 12 men crews

1 elevator / 9 mile radius

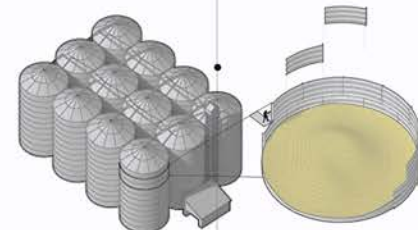
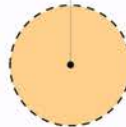


**CONCRETE GRAIN TERMINAL**

Average Bushel Capacity = 80,000 to 100,000

- Reinforced concrete is cast into framework
- Constructed with crews of 40+ and the use of a crane

1 elevator / 15 mile radius



**STEEL GRAIN SILO**

Average Bushel Capacity = 50,000 to 100,000

- Prefabricated galvanized steel panels are assembled by a small crew

1 elevator / 13 mile radius



—

On a large scale, grain elevators are a product of the co-operative agricultural economy and national rail network that shaped the Province of Saskatchewan and Canada as a Nation.



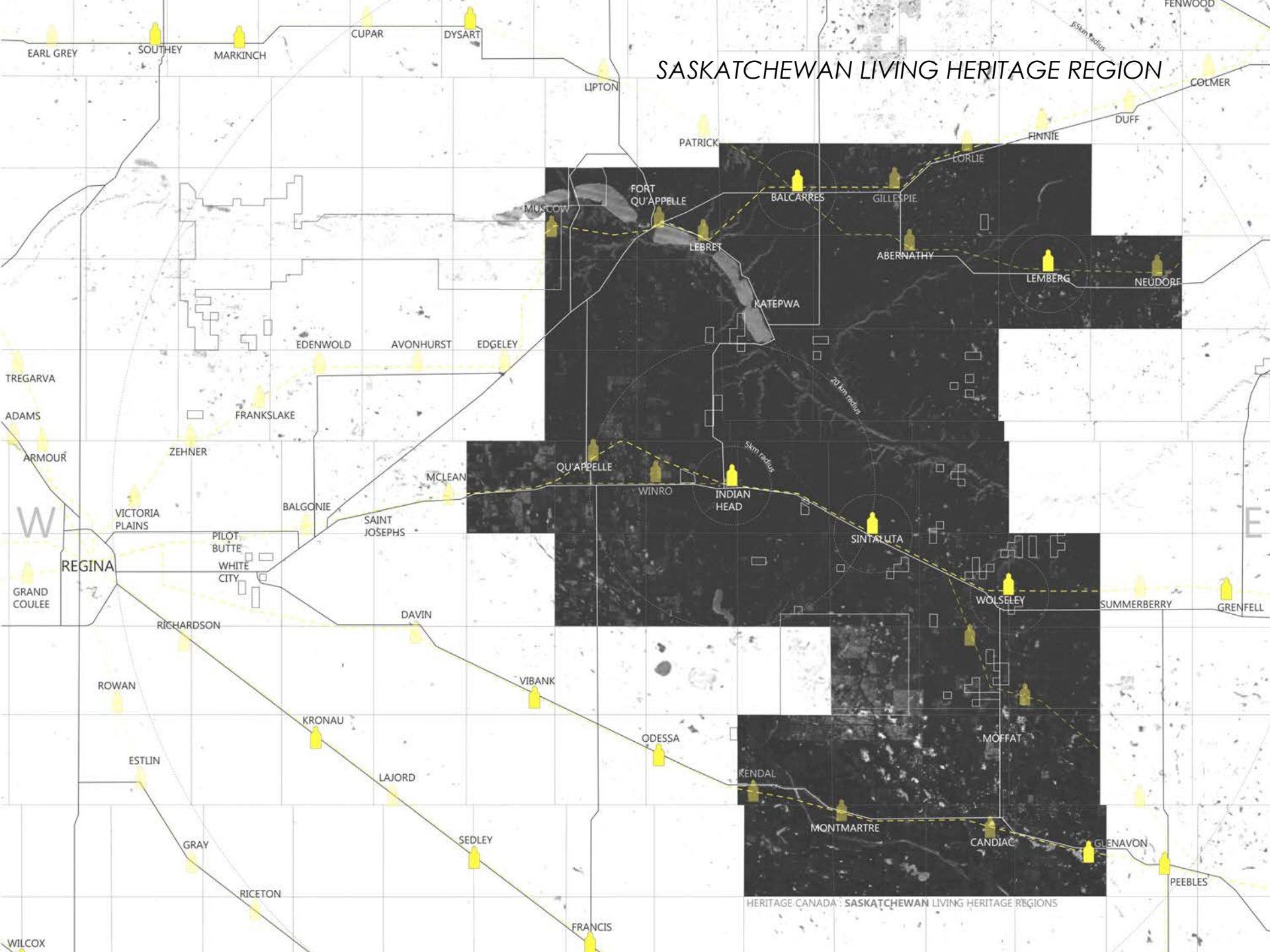
+

On a small scale, the elevators are an architecture that has evolved from functionality to monumentality, deeply rooted in the identities of prairie communities and their people.



Perspective	INSTRUMENTAL VALUES		(PERSONAL + COLLECTIVE) SENTIMENTS	
	Past	Present	Past	Present
<b>Farmer<sup>i</sup></b>	Economic Purpose		Sense of Financial Security	
	Gathering Place		Sense of Community	Sense of Loss - Abandonment
	Place Marker	Monumentality	Sense of Identity and Belonging	Sense of Sadness of a Bygone Era
<b>Elevator Operator<sup>ii</sup></b>	Economic Purpose		Sense of Financial Security	
	Place of Employment	Place Marker	Sense of Familiarity and Identity	Sense of Familiarity and Pride
	Hazardous Environment		Sense of Fear	
	Industrialization	Useless Structure	Sense of Accomplishment/ Progress	Sense of Annoyance at Dated Technology
	Gathering Place		Sense of Community	
<b>Town's Person<sup>iii</sup></b>	Economic Purpose		Sense of Prosperity	
	Place Marker	Monumentality	Sense of Identity and Belonging	Sense of Belonging and Pride
		Commonplace		Indifference
	Gathering Place		Sense of Community	Sense of Loss - Abandonment
	Economic Purpose		Sense of Hope for Financial Security	
<b>Aboriginal Peoples<sup>iv</sup></b>	Symbol of Colonialism		Sense of Oppression and Inequity	
		Monumentality		Sense of Sadness of a Bygone Era
<b>Passer-by/Tourist<sup>v</sup></b>		Iconic Form		Sense of Excitement
		Place Marker		Sense of Location and Distance
	Hazardous Environment	Hazardous Environment	Sense of Fear	Sense of Fear
<b>Friends/ Family of Individuals who Died in an Elevator<sup>vi</sup></b>	Grave Site	Grave Site	Sense of Grief	Sense of Grief

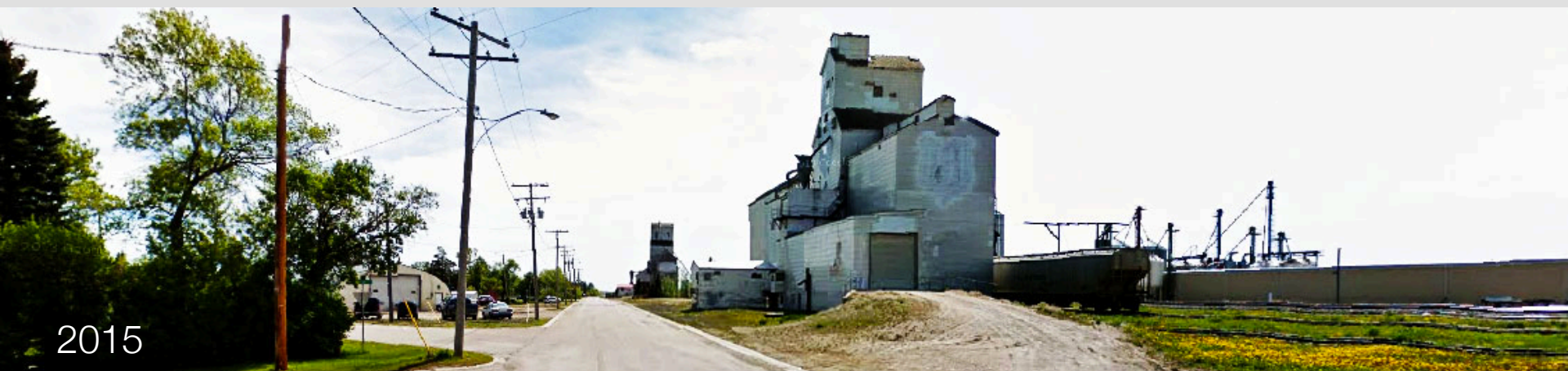
# SASKATCHEWAN LIVING HERITAGE REGION





## RE-IMAGINING GRAIN ELEVATORS

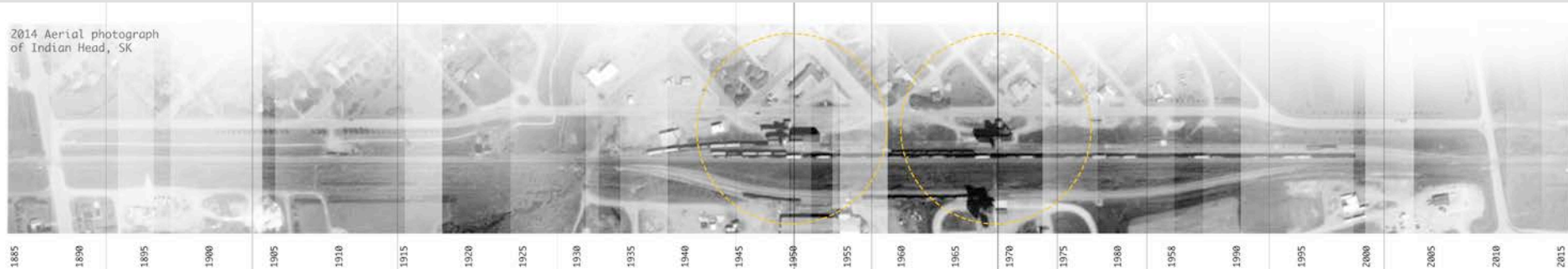
INDIAN HEAD



# RE-IMAGINING GRAIN ELEVATORS

## INDIAN HEAD

2014 Aerial photograph of Indian Head, SK



1919 Plan of elevator row drawn by The Western Canada Fire Underwriters' Association



• (-) PRIVATELY OWNED ELEVATOR

• (1905) LOCALLY OWNED ELEVATOR II  
• (-) HOLDEN BROS ELEVATOR COMPANY

• (1905) LOCALLY OWNED ELEVATOR I  
• (1930-1984) INTER-OCEAN

• (1930-1984) SASKATCHEWAN WHEAT POOL

• (1890) NORTHERN ELEVATOR  
• (1930) CARGILL  
• (1984) CARGILL

• (-) INTERIOR ELEVATOR CO.  
• (1930-1984) N.M. PATERSON

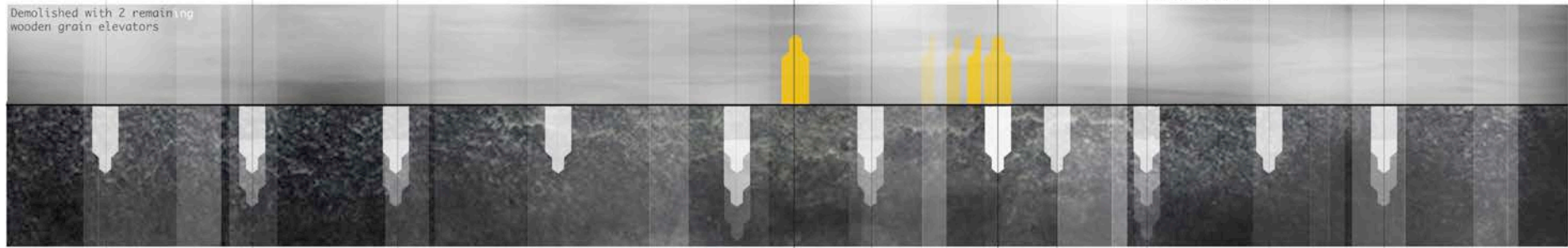
• (1907-1920) FARMER'S ELEVATOR

• (1884) BELL FARM ELEVATOR  
• (-) OGILVIE MILLING COMPANY OF WINNIPEG  
• (1930) WINRO POOL

• (-) PATERSON ELEVATOR

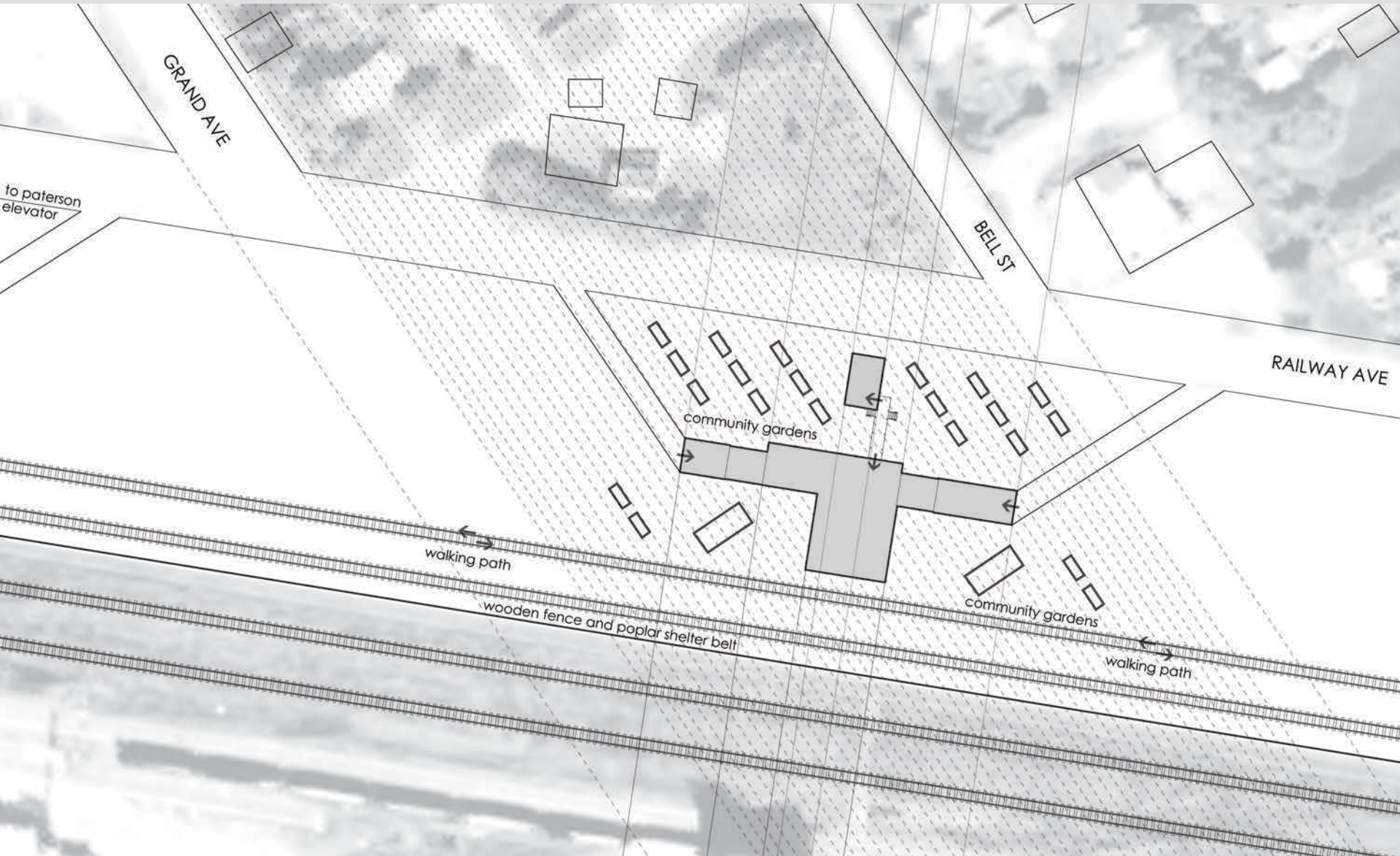
• (-) WESTERN CANADA FLOUR MILLS  
• (1930-1984) PARRISH AND HEIMBECKER

Demolished with 2 remaining wooden grain elevators





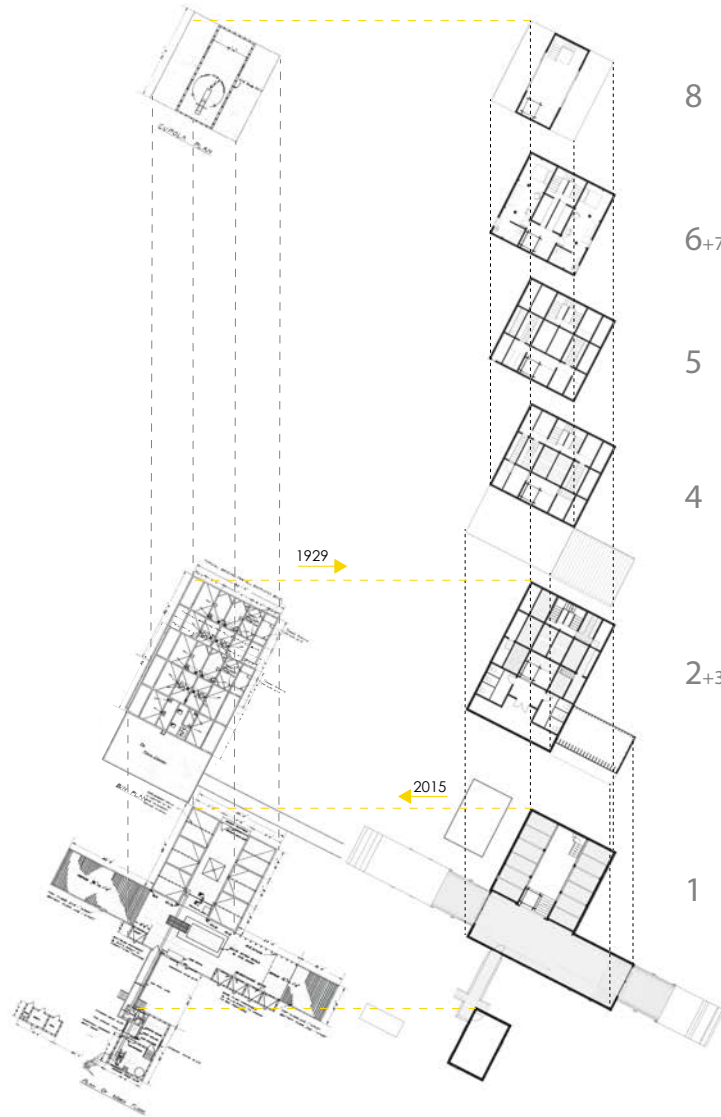




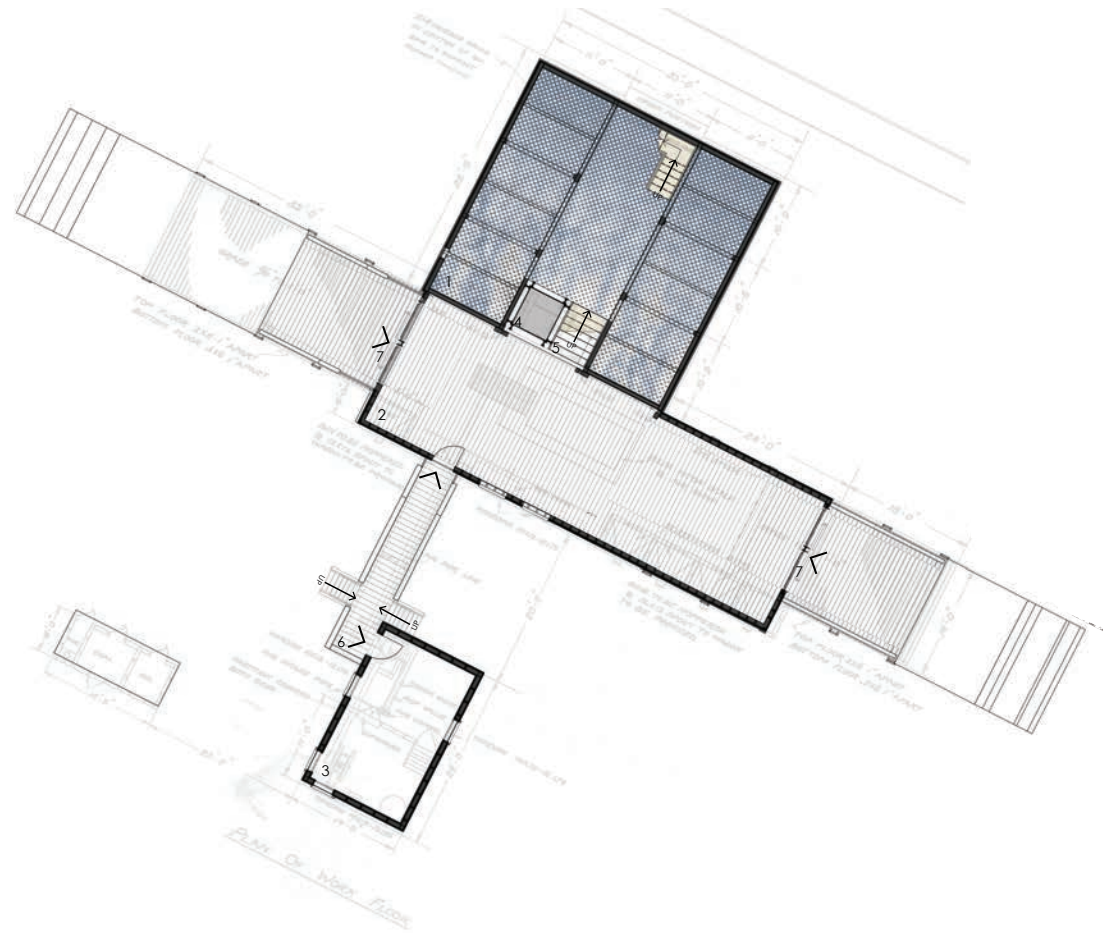


# RE-IMAGINING GRAIN ELEVATORS

# ADAPTIVE REUSE



8  
6+7  
5  
4  
2+3  
1





# RE-IMAGINING GRAIN ELEVATORS

# ADAPTIVE REUSE



## RE-IMAGINING GRAIN ELEVATORS

## BUILDING ENVELOPE AND WINDOW DESIGN

